



a castle in the making



Photo © Denis Gliksman

welcome to planet guédelon

The domed vault on the 1st floor of the western corner tower is taking shape

The masons are building a surbased vault which will cover the shooting gallery. This will be the 3rd such vault to be built at Guédelon (chapel tower basement and the ground floor of the eastern corner tower); fixing the stones without a centring beneath is nevertheless a technical challenge for the team. Alternate slabs of sandstone and limestone, dressed by the stonemasons, form the first rows.



The next rows of sandstone slabs will be sent straight to the masons by from the quarrymen. Each "ring" is held in position by wooden poles.

Once the mortar has set enough to hold the stones in place, the stonemasons begin work on the next level until the dome is complete. To ensure that the dome is spherical, the team use a compass: a wooden pole fixed at the centre of the tower.

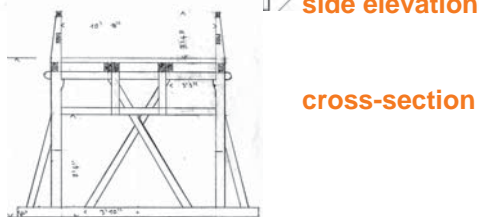
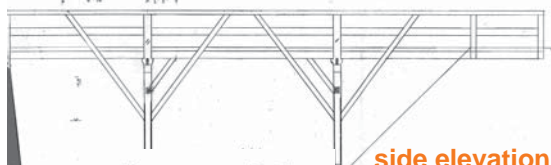


the compass

Once the dome is finished at the beginning of August, the masons will then continue building the exterior facing walls of the western corner tower in preparation for the building, next season, of the future pigeon loft on the next level.

building bridges

In the coming years, the fixed bridge will have to be closed during the building of the gatehouse; in anticipation of this, the carpenters are building a second bridge which will provide access to the courtyard and make it possible to keep the site supplied with materials. The bridge was made by the team of woodsmen and carpenter-joiners and is being assembled across the eastern outer ditch.



The entire structure is in wood; not an iron nail in sight!

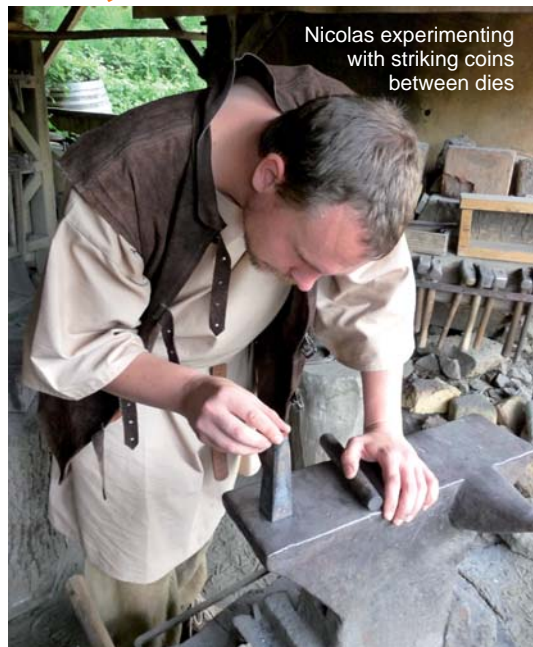
The first pier was assembled and then hoisted into position. The carpenters will then fix the roadway and the handrails before starting work on the second section.

The bridge is scheduled for completion by early August.

new workshop in mint condition

As announced in the last edition of *A castle in the making*, a new workshop will be making an appearance on site: the Guédelon **mint**. Built against the eastern curtain wall in the courtyard, Nicolas will be striking coins using medieval techniques. The first date is programmed for **thursday 11th august 2016**.

Further dates will be announced on www.guedelon.fr



trouble at mill

The heavy rain last June caused serious damage to the **mill race**. The weakened banks were leaking badly. Our millers, with the support of a team of stonemasons, have now strengthened the banks. The mill remained opened to the public during the repairs and flour production will start again in a few days...

hats off to our "bâisseurs" !



A big thank you to our **140 bâisseurs*** who joined us for the day on the 11th June. Thankfully the appalling weather conditions didn't dampen their spirits. Thanks again to you all!

*bâisseur: castle-building course participants working at Guédelon for a few days



a summer garden

