



a castle in the making...

Dear virtual visitors,

The construction site is bathed in bright spring sunshine, and for our 20th anniversary of the laying of the first stone, we have a packed building programme ahead of us: the stonemasons will be working on the twin tower's of the castle's gatehouse while the woodsmen and the carpenters square-up, make and assemble the Chapel Tower's roof timbers.

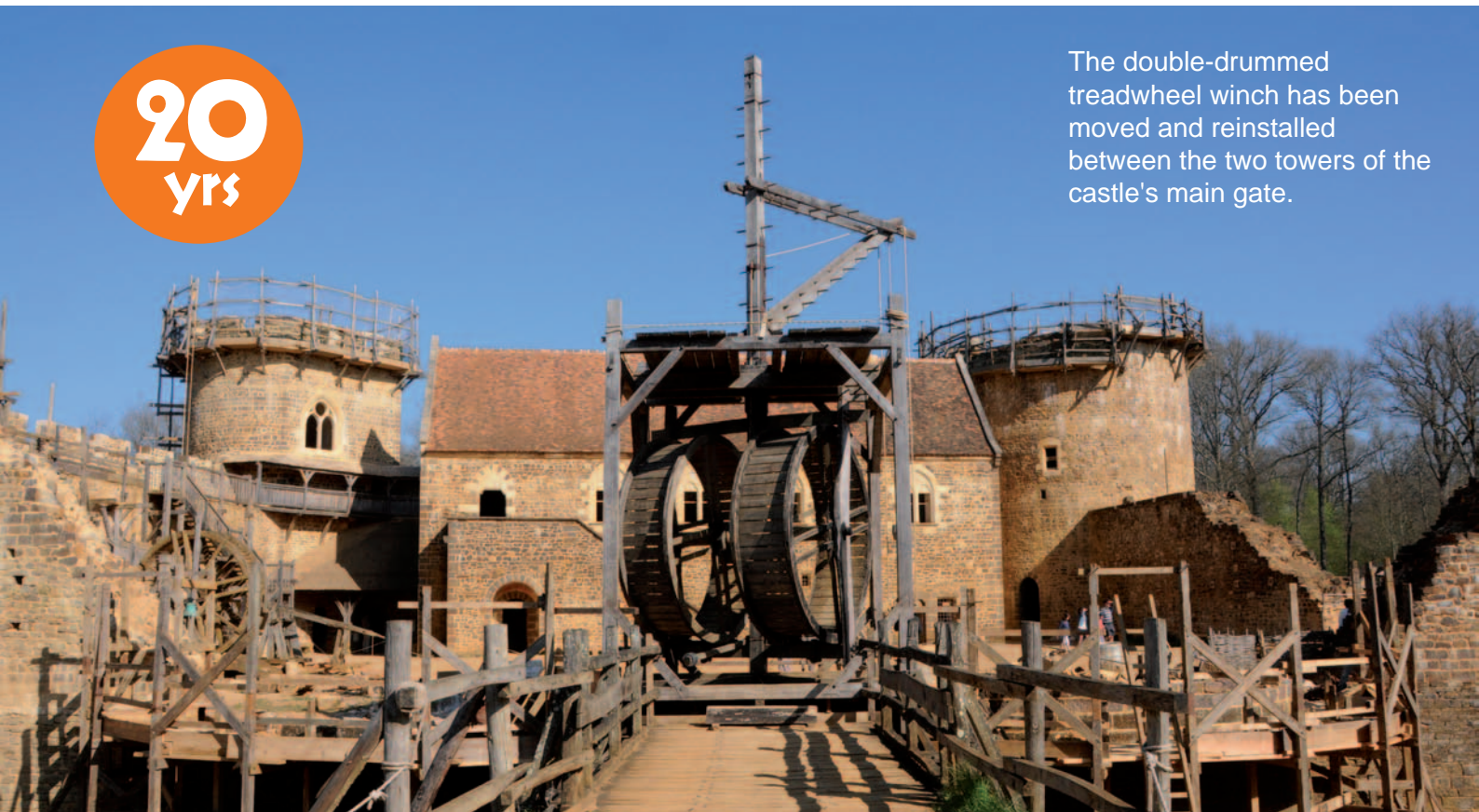
20 years ago, we were dreaming of building a castle while others were dreaming of walking on Mars!

Keep building your dreams.

Maryline Martin



The double-drummed treadwheel winch has been moved and reinstalled between the two towers of the castle's main gate.

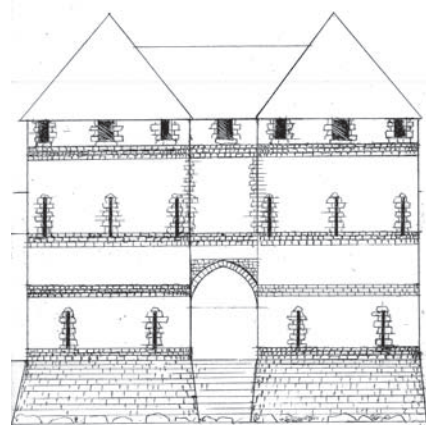


2017 season's building programme

The gatehouse

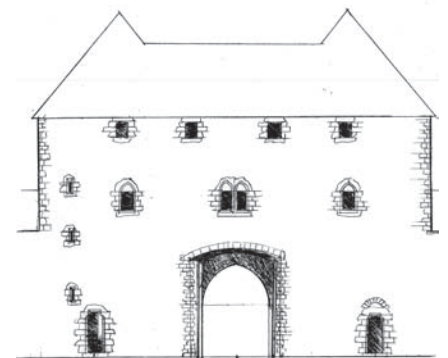
Work on the castle's southern façade, which has been on hold since 2002, will start up again this season with the building of the **twin towers** which will make up the **castle's main gatehouse**.

Initially a much larger, more imposing gatehouse was planned. A building built behind the towers would have protuded into the courtyard; however, such an imposing design did not correspond to the size of Guédelon Castle or to the social standing of its fictional lord.



exterior elevation of gatehouse

Scaled-down plans were therefore drawn up in order to reduce the building's overall footprint in the courtyard.



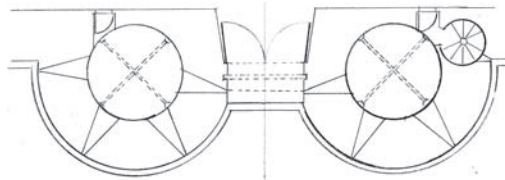
interior view of the gatehouse

The gate built between twin towers has a series of **exterior defensive features**:

- numerous **arrow loops**
- a **murder hole** above the corridor
- a wooden **portcullis** protecting the main gate

The gatehouse (continued)

The first phase of building work on the gatehouse this season, consists of simultaneously bringing the **walls** up to the height of the vaults, that is 2.10 m, and building the **arrow loops**.



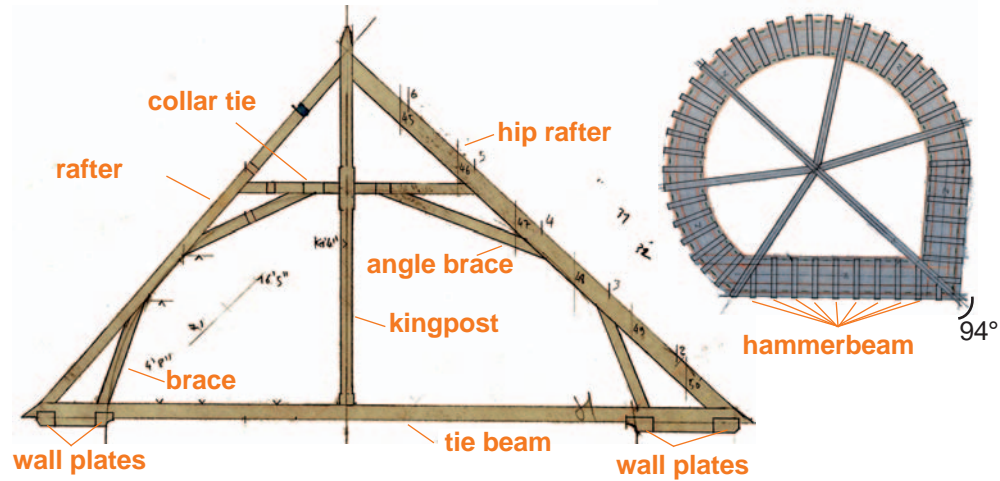
cross-section of gatehouse's ground floor



first three rows of the left-hand tower have been fixed

The Chapel Tower's pepperpot roof timbers

This marks an important moment in the construction process as this will be the **first tower to be fitted with roof timbers**. Owing to the cut-off wall facing the courtyard, the carpenters have designed a structure which takes into account the 94° angle. The plans are based on the authenticated C13th roof timbers of Semur-en-Auxois Castle (21). The roof timbers are made up of **51 half-trusses**; the work of squaring up a total of **251 oaks** is already well underway.



plan of main truss



Nicolas has already started squaring up the **kingpost**, the central post in the framework.

Kingpost:
8 inches x 8 inches*
Length: 240 inches*

*20 cm x 20 cm x 6 m long
NB: Guédelon inch = 2.5 cm



Jean-Michel squaring up one of the **48 rafters**.

Rafter:
6 inches x 6 inches*
Length of this type of rafter:
280 inches*

*15 cm x 15 cm x 7 m long



Vincent squaring up one of the **19 collar ties**.

Collar tie:
6 inches x 6 inches*
Length of this type of collar tie: 80 inches*

*15 cm x 15 cm x 2 m long

The Great Tower's ground floor

Fabrice is in the process of rendering the walls of the shooting gallery on the Great Tower's ground floor. This lime render will make the room much lighter.



The pigeon-loft on the western corner tower

The work of building the castle's pigeon-loft will also start again on the first floor of this tower.

